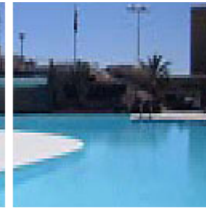
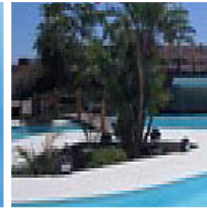


ACF10 OFF-GAS DESTRUCTOR

For Ozone Systems

HEADWORKS
BIOLOGY
SEPARATION
MEMBRANE
▶ **DISINFECTION**
BIOSOLIDS
SYSTEMS



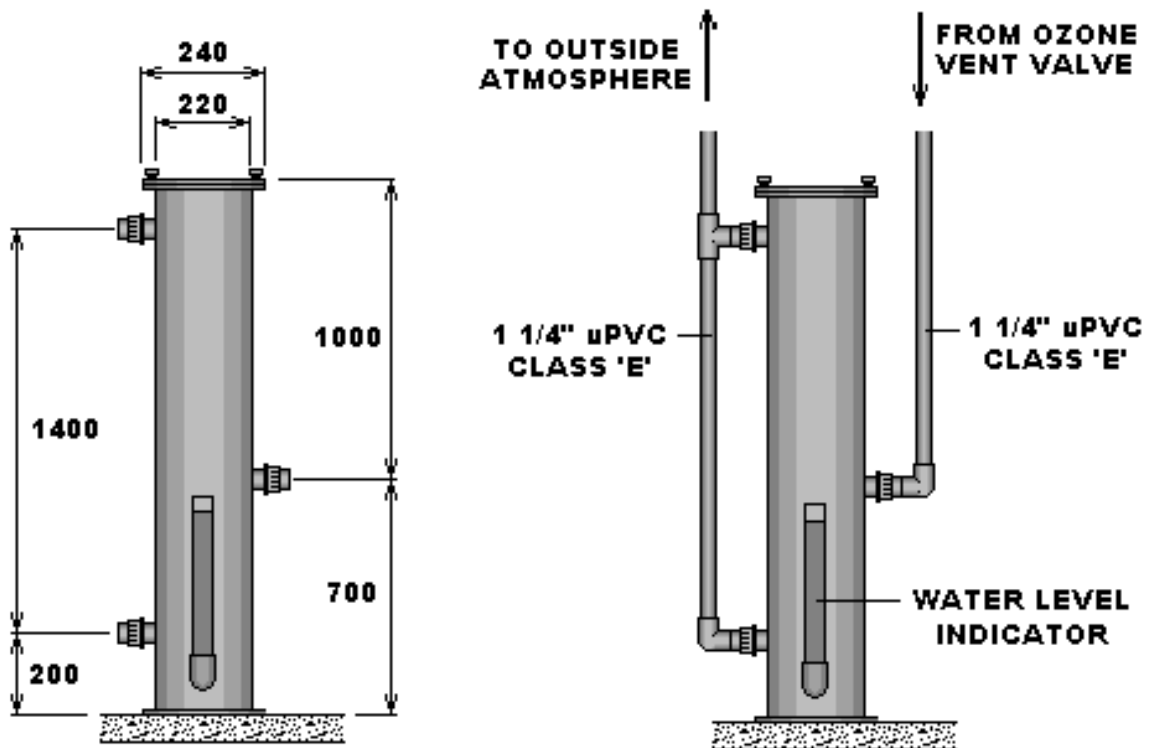
OZONE

**OZONE
DESTRUCTION**

SPA

SWIMMING POOL

▶ Ancilliary Products



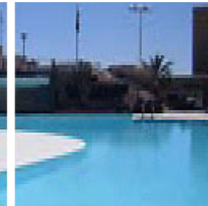
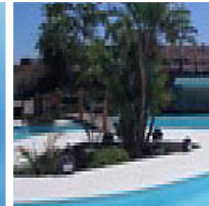
- VENTED AIRFLOW (MAX) - 10 M3/HR**
- WEIGHT OF CARBON (KG) - 25**
- WEIGHT OF GRAVEL (KG) - 7**
- WEIGHT OF VESSEL (KG) - 14**
- CONNECTION UNIONS - 1 1/4"**

NOTE: THE DESTRUCTOR VESSEL IS CONSTRUCTED FROM uPVC AND SUPPLIED WITH WATER LEVEL INDICATOR AS SHOWN

ACF30 OFF-GAS DESTRUCTOR

For Ozone Systems

HEADWORKS
BIOLOGY
SEPARATION
MEMBRANE
▶ DISINFECTION
BIOSOLIDS
SYSTEMS



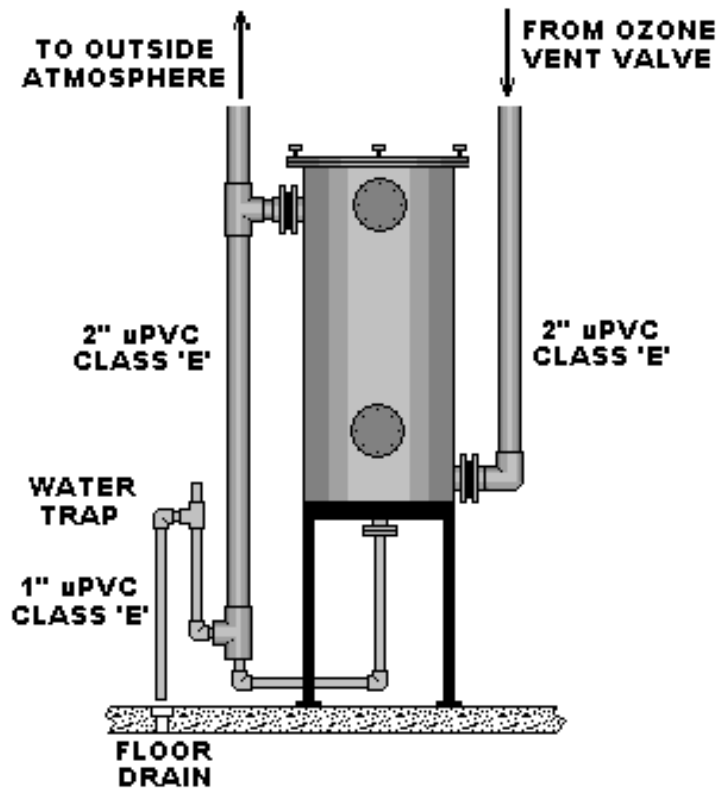
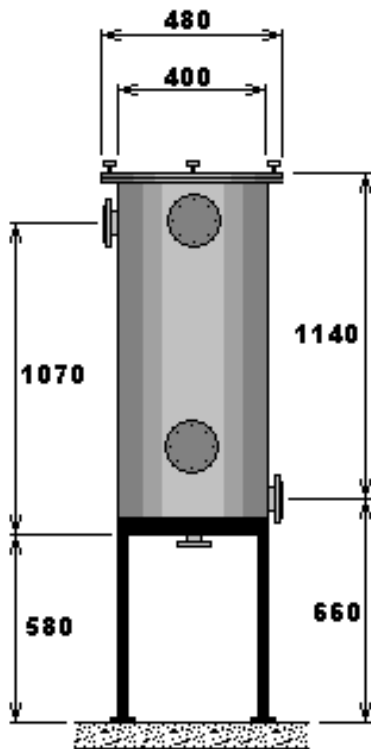
OZONE

OZONE
DESTRUCTION

SPA

SWIMMING POOL

▶ Ancillary Products



- VENTED AIRFLOW (MAX) - 30 M³/HR
- WEIGHT OF CARBON (KG) - 50
- WEIGHT OF GRAVEL (KG) - 25
- WEIGHT OF VESSEL (KG) - 48
- CONNECTION FLANGES - 2" & 1"

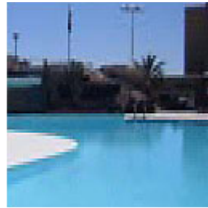
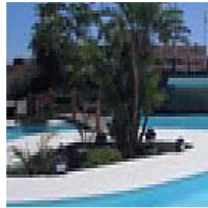
NOTE: THE DESTRUCTOR VESSEL IS CONSTRUCTED FROM GRP WRAPPED uPVC AND SUPPLIED WITH PAINTED METAL STAND AS SHOWN

**NOTE: FLANGE CONNECTIONS ARE BS4504 NP10 AS STANDARD
ANSI 150 RF CAN BE SUPPLIED ON REQUEST**

ACF60 OFF-GAS DESTRUCTOR

For Ozone Systems

HEADWORKS
BIOLOGY
SEPARATION
MEMBRANE
▶ DISINFECTION
BIOSOLIDS
SYSTEMS



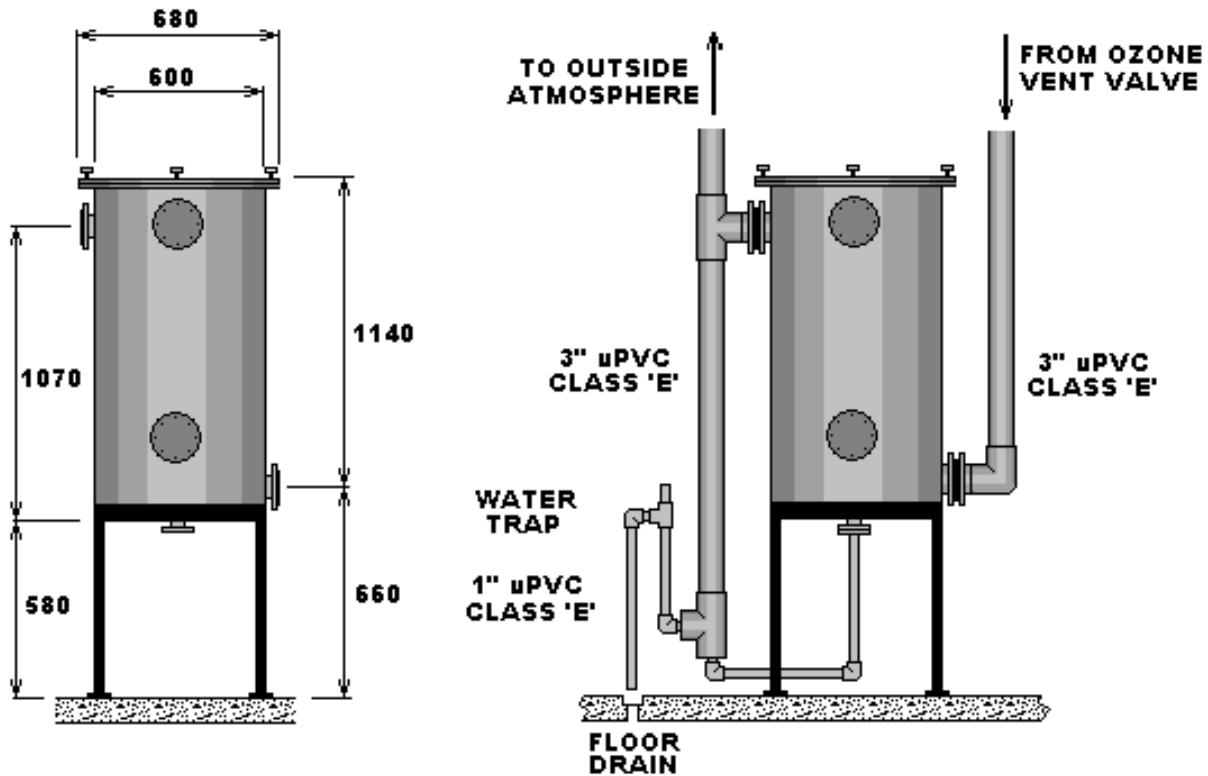
OZONE

OZONE
DESTRUCTION

SPA

SWIMMING POOL

▶ Ancilliary Products



- VENTED AIRFLOW (MAX) - 60 M3/HR**
- WEIGHT OF CARBON (KG) - 40**
- WEIGHT OF GRAVEL (KG) - 125**
- WEIGHT OF VESSEL (KG) - 80**
- CONNECTION FLANGES - 3" & 1"**

NOTE: THE DESTRUCTOR VESSEL IS CONSTRUCTED FROM GRP WRAPPED uPVC AND SUPPLIED WITH PAINTED METAL STAND AS SHOWN

**NOTE: FLANGE CONNECTIONS ARE BS4504 NP10 AS STANDARD
ANSI 150 RF CAN BE SUPPLIED ON REQUEST**